

Spring 2025

Vol. 61 No. 2

In this issue

Seldom Seen Land Mammals
of LMG

Call to Action for
Monarch Butterflies

Moth Mondays

Woodland Trail Tours

Tallgrass Prairie Tours

Lunch in Bloom – Save the Date

Nature Journal Workshop

Ecology Camp 2025

8K Trail Race & Fun Runs

Annual Plant Sale

Welcome New Members

Thank You to Our
Many Supporters

Memorials

Calendar of Events

Visit the Garden!

Hours of Operation:

NATURE CENTER

10 – 4 — Tuesday – Saturday

1 – 4 — Sunday

Closed Monday

GARDEN

Garden is open every day
sunrise to sunset.

P: 217-529-1111

E: joel@lincolnmemorialgarden.org

www.lincolnmemorialgarden.org



STAFF

Executive DirectorJoel Horwedel

Environmental Educator ... Audra Walters

NaturalistMarissa Jones

Board PresidentMegan Styles

Newsletter Team

Dick and Helen Adorjan, Polly Danforth,

Colleen Germeraad, Melissa Skinner-

Lieberman, Megan Styles, Cathy Slater,

Audra Walters and Kathy Andrews Wright



Seldom Seen Land Mammals of LMG

by Kathy Andrews Wright

In prior editions of *Seasons* we have addressed the mammals commonly seen at Lincoln Memorial Garden, including those inhabiting aquatic habitats. Let's wrap up this series with a story highlighting the species that are rarely spotted.

Small but Mighty Mammals — Bats

Thirteen species of bats typically occur in Illinois, with seven species—big brown, hoary, eastern red, little brown, silver-haired, evening and Indiana (federally and state endangered)—documented as occurring at LMG. As small and nocturnal species, verifying species of bats is difficult. An acoustical monitoring project taking place at the Garden allows species identification through recordings of bat vocalizations. The 2025 bat monitoring program starts April 15 and runs through September 15. Interested in becoming a bat monitor? Contact Marissa Jones at marissa@lincolnmemorialgarden.org.



Bats in a shelter box at LMG. Photo by Kathy Andrews Wright.



Eastern mole, photo from Getty Images

Eastern Mole

Mounded soil on the trails at Lincoln Memorial Garden hint of the presence of a common, but seldom seen, Illinois mammal, the eastern mole. Weighing only 4 ounces, its powerful musculature and large, webbed front feet allow this mighty excavator to create extensive tunnels as they hunt for insects, larvae, grubs, earthworms, slugs, snails, millipedes, centipedes and spiders. They also eat plant material, such as corn, grasses, oats and wheat. While less than 8 inches in length, the mole can tunnel about 18 feet an hour. They can be found in areas with well-drained sandy or loamy soils in woodlands, pastures, meadows, gardens, lawns and agricultural fields.

—continued on page 6



Director's Message

by Joel Horwedel

Happy New Year!

On behalf of the Garden's board, staff, and myself, I would like to thank everyone who generously donated to our annual fund. This year's campaign was extremely important, and many of you went above and beyond and completely overwhelmed us with your generosity.

A huge thanks to Tom and Cindy Wilkin, Kathy and Rick Wright and the grounds crew for all their hard work decorating the Garden for the holidays! Hundreds of families took advantage of our photo opportunities, and the Garden looked spectacular.

As the end of winter approaches, our annual maple syrup demonstrations kick into full swing, followed by our Pancake and Sausage Breakfast and Silent Auction! This year will mark the first full year of operation for our Children's Woodland Garden. If you haven't had the opportunity to experience it yet, we encourage you to bring your kids for some outdoor family fun! The water features will be turned back on at the beginning of April.

We have many exciting programs and activities planned for the spring, and I would like to remind everyone that our annual meeting and volunteer party will be held on April 9. Please watch our website and Facebook for more details about all our events. Also, don't forget about the LMG 8K Trail Race and Kids' Fun Runs, set for June 7! Signup is currently underway; for details please visit the LMG website.

On April 18, LMG will be partnering with several other nature-related organizations in Springfield to provide an Earth Day event at the Hoogland. There will be a special art exhibit by the Sangamon Watercolor Society followed by a presentation by Chad Pregracke of Living Lands and Waters. Watch our website for more details.

Lastly, I would like to thank the Darien Garden Club, Sprouts Youth Program, for their generous donation to the Children's Woodland Garden. This youth organization created flower bouquets for sale, and they decided to send their proceeds to LMG's CWG project. We can't thank them enough for their support! Have a wonderful spring, and I hope to see you out in the Garden! ~



Call to Action for Monarch Butterflies

by Kathy Andrews Wright

Nationwide, populations of Illinois' state insect, the monarch butterfly, have reached their second lowest level ever recorded. The U.S. Fish and Wildlife Service is considering listing the monarch as a federally endangered or threatened species.

Since 2016, the Illinois Monarch Project (illinoismonarchproject.org) has been working to help coordinate and further monarch conservation work in the state. Midwest states have a goal of adding 1.3 billion new milkweed stems and other nectar-producing plants to the landscape, with Illinois' commitment being 150 million plants.

Can you be a part of the movement to enhance monarch food sources throughout Illinois? Make conscious decisions on what you add to your landscape plantings this year. There will be plenty of monarch-friendly native plants available through the Lincoln Memorial Garden plants sales this spring. Watch for opportunities to make your online purchases at lincolnmemorialgarden.org. If you are shopping for plants elsewhere, the Illinois Monarch Project and Illinois Extension's Illinois Pollinators (illinoismonarchproject.org) websites can help you make informed plant selections.

For more on the status of monarchs, visit the recent *OutdoorIllinois Journal* article *The Magic of Monarchs: Acting on the Conservation Opportunity of Our Lifetime* at outdoor.wildlifeillinois.org. ~

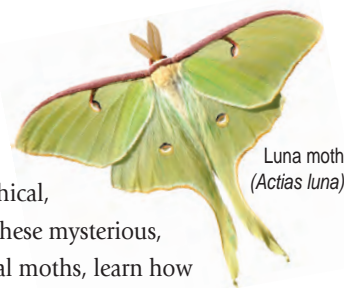
It's **MAPLE SYRUP TIME**
at **Lincoln Memorial Garden**
PANCAKE & SAUSAGE BREAKFAST!
MARCH 22-23 & MARCH 29-30
8 A.M. - 12 P.M.

RESERVATIONS: lincolnmemorialgarden.org

Moth Mondays at Lincoln Memorial Garden

Step into the fascinating world of moths with our upcoming educational series! Using a passive phototactic moth trap—an ethical, light-based method of observation—we will get a closer look at these mysterious, underappreciated nocturnal pollinators. We will identify our local moths, learn how they navigate the night, support ecosystems, interact with native plants and share the results LIVE on our Facebook page each Monday.

Plus, do not miss the opportunity to bring the magic home! Our upcoming plant sales will have a selection of host plants and other pollinator-friendly species for sale, such as wild geranium (*Geranium maculatum*) and blue sage (*Salvia azurea*), perfect for attracting and supporting moths in your backyard. Whether you are a curious beginner or a seasoned nature enthusiast, this series will shine a light on the incredible world of moths! ∞



Luna moth
(*Actias luna*)

Woodland Trail Tours at LMG

Experience the beauty of nature with our guided **Woodland Trail Tours at LMG**! Hop aboard our comfortable golf cart and journey along scenic trails as our knowledgeable guides share the rich history of the Garden, highlight seasonal blooms and introduce you to the diverse wildlife that call this landscape home. Perfect for nature lovers of all ages, this relaxing tour offers a unique way to connect with the flourishing flora and fauna while enjoying the peaceful surroundings of the woodland. Sit back, soak in the sights and let nature's beauty unfold around you!

Tours are held the last Monday of each month from March – August at 10 a.m. Participants must register in advance given limited seats are available. Cost is \$20 for non-members and \$15 for members. ∞

Tallgrass Prairie Tours by LMG

Join us for an immersive experience in the stunning Tallgrass Prairie, guided by golf cart or on foot along tranquil trails. Explore the thriving flora and fauna of this unique ecosystem, where you will have the opportunity to ask questions about starting your own home prairie or garden, and you will learn how to identify native prairie plants. Our expert guides will share the wonders of phenology—tracking the cyclical events in nature such as blooming times, leaf changes and animal behaviors—helping you understand how these shifts reflect the changing seasons. You will also have the chance to try nature journaling, capturing your personal observations and reflections during the tour. Whether you are an avid gardener, a budding naturalist or simply seeking to spend more time in nature, our tours offer the perfect way to deepen your connection with the world around you.

Tours are held at the Ostermeier Prairie Center on the last Friday of each month from March – July at 10 a.m. and are free to the public. ∞



Photo by Virginia Scott

Nature Book Group

The Tuesday, May 6, 2025 choice is *The Serviceberry*, by Robin Wall Kimmerer. The group will meet at LMG at 10 a.m.

The Tuesday, August 5, 2025 choice is *Around the World in 80 Plants* by Jonathan Drori. The group will meet at Adams Wildlife Sanctuary at 10 a.m.

The Tuesday, November 4, 2025 choice is *The Light Eaters* by Zoe Schlanger. The group will meet at LMG at 10 a.m. ∞



Save the Date!



Sunday, May 18

11 a.m. - 1 p.m.

Island Bay Yacht Club

**Social Hour with Live Music
(Cash Bar), Buffet Luncheon,
Remarks from Garden Leadership**

Adults \$60 and Children \$20
Information regarding ticket reservations
will be available after April 1.
We hope you will reserve this date
and join us to celebrate another
beautiful year at Lincoln
Memorial Garden! ∞

Nature Journal Workshop for LMG Members

April 12

Angie Jungbluth, naturalist, artist, and certified interpretive guide, will visit LMG on Saturday, April 12, from 10 a.m. – 12 p.m. for a members-only workshop introducing the concepts and principles of nature journaling.

In addition to teaching middle school science for 25 years and nature journaling for over 20, Jungbluth also works as a Volunteer Conservation Naturalist for the Missouri Department of Conservation and is a Resident Artist and Volunteer Naturalist for Missouri State Parks. Her professional experience also includes work with the National Park System, the Saint Louis Zoo, and the Missouri Botanical Garden. Personally, she has traveled extensively throughout the United States' National Park System and has studied in the rainforest of Belize.



Angie Jungbluth

"Through a variety of techniques that I present, I help others explore the world around them with fresh eyes and capture their observations and experiences on paper. It is an amazing gift to pass on."

—Angie Jungbluth
Naturalist, Artist, Certified Interpretive Guide

At this two-hour workshop, attendees will be introduced to nature journaling and will explore concepts that can be utilized by adults and children alike. This event is open to members aged 12+, and children must co-register with an adult. Attendees will receive a small journal and art supplies on the day of the workshop. Members should dress appropriately for the weather as a portion of the program will include time outdoors to practice the concepts learned in the instructional portion of the program.

This event is open to all LMG members, and the cost for the two-hour workshop, including all necessary supplies, is \$20/person. To register: Visit LMG's website on or after March 24 or call LMG at 217-529-1111 for more information. Space is limited to the first 30 registrants. ♡



Above: Sample of Angie's journal pages, shown on her web site — <https://artbyangie.wixsite.com/explore/blog>.

Garden Receives Grant for Nature Journaling

Lincoln Memorial Garden has received an Environmental Education Association of Illinois' mini-grant program grant to assist in conducting a workshop on nature journaling. If you can, join us at the Garden on April 12, 2025 to discover how nature journaling can stimulate your curiosity in and connections to nature. ♡



Lincoln Memorial Garden

Kids Discover Nature at Ecology Camp

Ecology Camp at Lincoln Memorial Garden offers children ages 4–15 the opportunity to explore the varied ecosystems of Illinois including the prairie, woodlands, wetlands and savanna.

Our camp is designed to cultivate respect and appreciation for the environment and inspire a sense of wonder through direct experiences with the natural world.

Weeklong sessions include nature hikes, outdoor games, hands-on activities, nature crafts, and animal and plant encounters. Our Nature Center provides an indoor area of learning, but the great outdoors will be our place of play and discovery.

Registration is available on the LMG website: lincolnmemorialgarden.org.



Photo by Jonathan Cunningham



There is just a short time until the ninth edition of the **Lincoln Memorial Garden 8k Trail Race and Fun Runs on June 7!** The race follows a truly unique and beautiful course along well-kept woodland trails, beside Lake Springfield, and throughout the grounds of the Ostermeier Prairie Center. Come and experience the Garden with other runners and nature-lovers on a spring morning!

Following the race, include the whole family in the fun! At 9 a.m., kids can participate in a Fun Run by the pond at the Cawley Meadow. Please see the website for more details:

<https://runsignup.com/Race/IL/Springfield/LincolnMemorialGarden>

When: June 7 at 7:30 a.m.

Registration: \$32 (\$37 after Apr. 15)

Kids' Fun Run: \$7.50 per child

We are still looking for Gold, Silver, and Bronze Level sponsorships if your business would like to support LMG!

Membership Matters

If you are a **current** Member of Lincoln Memorial Garden, be sure to **RENEW** your membership soon if you have not done so already. Your annual membership may lapse on May 31.

If you are not yet a member, we would love for you to join our family! **Lincoln Memorial Garden is a private, self-sustaining, 501(c)(3) organization that relies 100% on donations and memberships.** It is a common misconception that we are a publicly-funded park or nature preserve. Your annual membership helps fund our mission and operations, so we can keep the trails maintained and continue to offer robust education programming and activities.

Ask a staff person at the Nature Center, call 217-529-1111, or visit <https://www.lincolnmemorialgarden.org/support-the-garden/membership/> to learn about the many exciting benefits of membership for you and your family.

Your support and friendship mean so much, thank you!



Southern Flying Squirrel

At 1.5 to 5 ounces, the southern flying squirrel is the smallest member of the squirrel family found in the Prairie State. This nocturnal species lives in hardwood forests with nearby water sources. Among its preferred foods are hickory nuts, acorns, fungi, fruits, bird eggs and insects. Contrary to its name, the flying squirrel doesn't fly but uses the flap of loose skin between its front and back legs to glide between trees. During the day, the flying squirrel hangs out in a tree cavity, building, or an old squirrel or bird nest.



Southern flying squirrel, photo from Getty Images



White-footed mouse, photo from Getty Images

Voles and Mice

Several species of voles and mice are found in Illinois, and likely occur at Lincoln Memorial Garden. Meadow and woodland voles are common, small, stocky rodents that feed on vegetation found in prairies and woodlands. Deer mice and white-footed mice are similar in appearance and occur throughout the state. Deer mice inhabit grasslands and barren fields while white-footed mice prefer wooded and brushy areas. The house mouse, native to southwestern Asia, was introduced to North America when it stowed away on early 16th century ships. House mice likely occur in and around buildings. Voles and mice have short life spans, but they are capable of producing many young during their lifetime, an important consideration as they form the base of many food chains and are a major food source for predators such as foxes, hawks and snakes.

Shrew

With some "shrew-ed" observation skills you may be able to find an amazingly ferocious, but small, nocturnal insect-eater—a shrew. With an incredibly high metabolic rate, shrews will consume their own weight in insects, spiders, slugs, worms, roots, nuts and fruit every 3 hours. Having poor vision, shrews hunt using the senses of touch, smell and hearing. Three species of shrews likely occur in the Lincoln Memorial Garden area: the northern short-tailed (4 to 5 inches in length, including the tail; forests and grasslands), the North American least shrew (2.5 to 3.5 inches long, including the tail; grassy or weedy fields); and the southeastern shrew (3 to 4 inches in length, including the tail; prairies and grassy fields).



North American least shrew, photo from Shutterstock

—continued on next page

Lincoln Memorial Garden Mission

Lincoln Memorial Garden & Nature Center welcomes everyone to experience the native landscape known to Abraham Lincoln.

In an atmosphere of peace and beauty, LMG's landscape, designed by Jens Jensen, is a place to find inspiration in the changing seasons and learn stewardship of the environment through thoughtful nature education.

Aim... Focus... Shoot!



Remember to take photos throughout the seasons when you visit the Garden, in anticipation of the 2025 Photo Contest. Watch future newsletters for details on this year's categories. The deadline to submit pictures is August 29, 2025.

Ask Ms. Audra or Message Ms. Marissa

Hey, kids! Do you have a question about a plant or an animal that you have seen at LMG? Have you wanted to know a bit more about a topic you studied at Summer Ecology Camp or Junior Naturalists? Do you have a cool nature drawing that you would like to share? Now is your chance! The *Seasons* Newsletter team plans to start an “Ask Ms. Audra” and a “Message Ms. Marissa” column in future issues, a place FOR KIDS with questions FROM KIDS.

We would love to hear from you. Questions may be directed to the following email addresses and should include “Ask Ms. Audra” or “Message Ms. Marissa” in the subject line:



Educator – Ms. Audra

audra@lincolnmemorialgarden.org

Head Gardener – Ms. Marissa

marissa@lincolnmemorialgarden.org



Please include your first name and age with each email. You can also stop by the Nature Center and write your question down at the front desk if you are visiting us in person. ∞

SELDOM SEEN LAND MAMMALS — cont'd from page 6



Striped skunk, photo from Getty Images

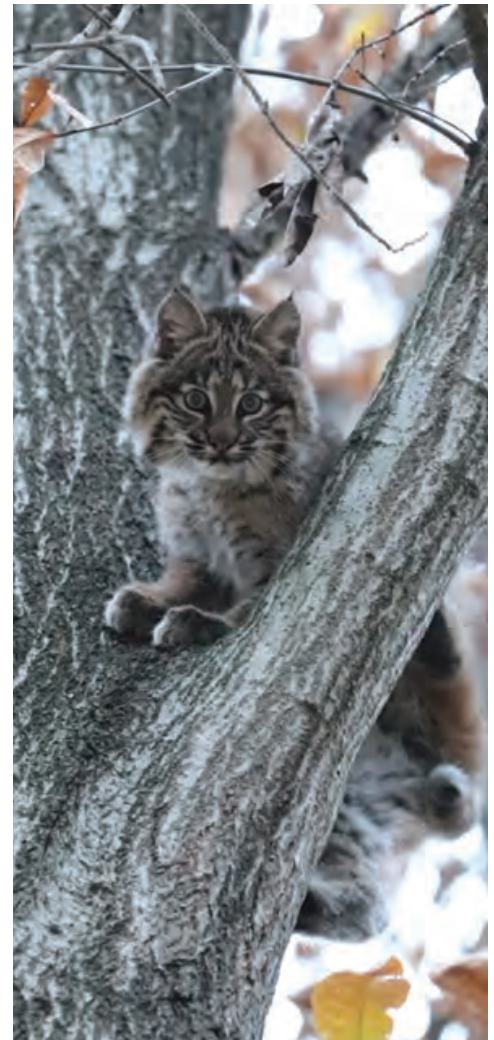
More Often Smelled Than Seen

You can't misidentify a **striped skunk** as its black-and-white fur and bushy tail are distinctive. But most of the time your first clue of a striped skunk's presence is catching a whiff of the pungent, rotten-egg scent they release, typically as their final warning to a predator. Stand back as skunks can accurately direct their spray up to 10 feet. And that noxious spray can travel nearly 20 feet. About the size of a small house cat, a skunk will weigh only 3 to 12 pounds. As a nocturnal mammal, most skunk sightings are at dusk and dawn as they search for food along habitat edges near a source of water. Skunks feed primarily on insects, but

they also will eat mice, rats, moles, shrews, young ground squirrels, rabbits, nestling birds and eggs, as well as berries, corn and other vegetation. Opportunistic feeders, skunks will take advantage of garbage or pet food where available.

Perhaps the Most Secretive?

Typically, quiet and nocturnal animals, **bobcats** are seldom noted as they roam bottomland forests, brushy ravines and open fields. If you're lucky you may hear them growl or emit a high-pitched scream. A fierce predator, bobcats have acute eyesight and hearing. As a top carnivore they are responsible for keeping local populations of mice, voles, rabbits and other small mammals under control. Approximately 2.25 to 3.5 feet in length, including the tail, bobcats are about 2 feet high at the shoulder and have an average weight of 22 pounds. Nearly extirpated from Illinois by the mid-1900s, the bobcat was an Illinois threatened species from 1977 to 1999. After their numbers rebounded, the bobcat was removed from the list of endangered and threatened species. Bobcats have been sighted around Lake Springfield, so it is highly likely that some night one may pass through the Garden. ∞



Bobcat, photo by Tom Skelly

LMG Annual Plant Sale

by Marissa Jones

'Tis the season for LMG's Woodland Wildflower and Sun Loving Plant Sale! We are proud to again offer some of our fan favorites as well as a selection of new species! Plants are pre-ordered online with plant pick-up at the Ostermeier Prairie Center on the dates shown below.

See the list of our Woodland and Sun Loving plants below. Beyond adding aesthetic colors and texture, most of our selection will offer additional wildlife benefits to your garden! Check out the Woodland and Sun Loving plants shopping list below, and pre-order your choices online at lincolnmemorialgarden.org.

Woodland Wildflower Plant Sale March 28 – April 9 Pre-Sale Online Orders opened April 12 Pick-up Woodland Wildflowers		Sun Loving Plant Sale April 25 – May 7 Pre-Sale Online Orders begin May 10 Pick-up Sun Loving Plants		Plants with a red ★ are NEW to LMG in 2025!
Woodland Wildflowers — for Sale in APRIL		<input type="checkbox"/> Ohio spiderwort ★ <input type="checkbox"/> old field goldenrod ★ <input type="checkbox"/> orange coneflower <input type="checkbox"/> plains oval sedge ★ <input type="checkbox"/> prairie blazingstar <input type="checkbox"/> prairie dropseed <input type="checkbox"/> purple coneflower <input type="checkbox"/> purple love grass <input type="checkbox"/> purple prairie clover <input type="checkbox"/> rose turtlehead ★ <input type="checkbox"/> royal catchfly (IL endangered) <input type="checkbox"/> sand bracted sedge ★ <input type="checkbox"/> wild petunia ★ <input type="checkbox"/> wild bergamot <input type="checkbox"/> wild lupine <input type="checkbox"/> zinnia – queen lime mix <input type="checkbox"/> zinnia – state fair mix <input type="checkbox"/> zinnia – Thumbelina (dwarf)		<i>Tradescantia ohiensis</i> <i>Solidago nemoralis</i> <i>Rudbeckia fulgida</i> <i>Carex brevior</i> <i>Ilatris pycnostachya</i> <i>Sporobolus heterolepis</i> <i>Echinacea purpurea</i> <i>Eragrostis spectabilis</i> <i>Dalea purpurea</i> <i>Chelone obliqua</i> <i>Silene regia</i> <i>Carex muskingumensis</i> <i>Reullia humilis</i> <i>Monarda fistulosa</i> <i>Lipinus perennis</i> <i>Zinnia elegans</i> <i>Zinnia elegans</i> <i>Zinnia elegans</i>
<input type="checkbox"/> blue-eyed grass ★ <input type="checkbox"/> Christmas fern <input type="checkbox"/> crested iris <input type="checkbox"/> Dutchman's breeches <input type="checkbox"/> foamflower ★ <input type="checkbox"/> ginger root ★ <input type="checkbox"/> geranium <input type="checkbox"/> golden poppy <input type="checkbox"/> Jack-in-the-pulpit <input type="checkbox"/> lady fern <input type="checkbox"/> Mayapple ★ <input type="checkbox"/> ostrich fern ★ <input type="checkbox"/> red trillium (rare IL wildflower) <input type="checkbox"/> royal fern <input type="checkbox"/> sharp-lobed hepatica <input type="checkbox"/> shooting star <input type="checkbox"/> skunk cabbage <input type="checkbox"/> spring beauty ★ <input type="checkbox"/> spotted wintergreen ★ <input type="checkbox"/> Virginia bluebells <input type="checkbox"/> wild columbine ★ <input type="checkbox"/> wild hyacinth ★ <input type="checkbox"/> white trout lily <input type="checkbox"/> white trillium <input type="checkbox"/> woodland phlox <input type="checkbox"/> yellow trout lily		<i>Sisyrinchium angustifolium</i> <i>Plystichum acrostichoides</i> <i>Iris cristata</i> <i>Dicentra cucullaria</i> <i>Tiarella cordifolia</i> <i>Asarum pycnocarpon</i> <i>Geranium maculatum</i> <i>Stylophorum diphyllum</i> <i>Arisaema triphyllum</i> <i>Athyrium filixemina</i> <i>Podophyllum peltatum</i> <i>Matteuccia struthiopteris</i> <i>Trillium erectum</i> <i>Osmunda regalis</i> <i>Hepatica nobilis var. acuta</i> <i>Dodecatheon meadia</i> <i>Symplocarpus foetidus</i> <i>Claytonia cirginica</i> <i>Chimaphila maculata</i> <i>Martensia virginica</i> <i>Aquilegia canadensis</i> <i>Camassia scilloides</i> <i>Erythronium albidum</i> <i>Trillium grandiflorum</i> <i>Phlox divaricata</i> <i>Erythronium americanum</i>		
Bareroot Trees & Shrubs — for Sale in APRIL		<input type="checkbox"/> butterfly <input type="checkbox"/> common <input type="checkbox"/> swamp, carmine (red)		<i>Asclepsia tuberosa</i> <i>Asclepsia syriaca</i> <i>Asclepsia incarnata</i>
<input type="checkbox"/> eastern redbud <input type="checkbox"/> white flowering dogwood <input type="checkbox"/> Saskatoon serviceberry ★		<i>Cercis canadensis</i> <i>Cornus florida</i> <i>Amelanchier alnifolia</i>		
Sun-Loving Natives — for Sale in MAY		<input type="checkbox"/> basil – lemon <input type="checkbox"/> basil – purple <input type="checkbox"/> basil – sweet <input type="checkbox"/> basil – Thai <input type="checkbox"/> cilantro <input type="checkbox"/> dill – fernleaf <input type="checkbox"/> fennel – Florence <input type="checkbox"/> lavender – munstead <input type="checkbox"/> oregano – Italian <input type="checkbox"/> parsley – Italian <input type="checkbox"/> pepper – hot jalepeño <input type="checkbox"/> pepper – sweet banana <input type="checkbox"/> pepper – sweet California wonder <input type="checkbox"/> rosemary – Tuscan blue <input type="checkbox"/> tomato – Cherokee purple (heirloom) <input type="checkbox"/> tomato – summer girl <input type="checkbox"/> tomato – San Marzano <input type="checkbox"/> tomato – cherry baby		<i>Ocimum basilicum cilrodorum</i> <i>Ocimum basilicum</i> <i>Ocimum basilicum</i> <i>Ocimum basilicum cilrodorum</i> <i>Coriandrum sativum</i> <i>Anethum graveolens</i> <i>Matricaria recutita</i> <i>Lavandula angustifolia</i> <i>Origanum marjoricum</i> <i>Petroselinum crispum</i> <i>Capsicum spp.</i> <i>Capsicum annuum</i> <i>Capsicum spp.</i> <i>Rosemarinus officinalis</i> <i>Solanum spp.</i> <i>Solanum spp.</i> <i>Solanum spp.</i> <i>Solanum spp.</i>
<input type="checkbox"/> blue sage (IL threatened) <input type="checkbox"/> Cardinal flower <input type="checkbox"/> cream wild indigo <input type="checkbox"/> golden Alexander <input type="checkbox"/> great blue lobelia <input type="checkbox"/> Joe-Pye-weed ★ <input type="checkbox"/> Missouri ironweed ★ <input type="checkbox"/> Mexican sunflower <input type="checkbox"/> New England aster ★		<i>Salvia azurea</i> <i>Lobelia cardinalis</i> <i>Baptisia bracteata</i> <i>Zizia aurea</i> <i>Lobelia siphilitica</i> <i>Eutrochium maculatum</i> <i>Veronia missurica</i> <i>Thithonia spp.</i> <i>Symphyotrichum novae-angliae</i>		

*** DISCLAIMER: The plant list selections depend on successful germination and ideal growing conditions which may be subject to change as the season progresses. Check the online shop for the most current plant selection. ***



New Members

Shadi Ahanchi
Trevor and Caitlin Akers
Darci A. Boston
Robert Cashen
Robin Duncan
Vickie E. Ellis
Sarah Gibson
Lexi A. Haley
Laura C. Healy
Jennifer and David Kepner
Stephanie Krager
Nanette Marx
Lori McKiernan
Seth and Kayla Morrison
Claudia Nash and Linda Andrews
Michelle L. Ofreneo
Nancy Robinson
Joseph Simon
Andrea Sponsler
Jamie N. Stout
Terry R. Warren



Calendar

APRIL

- 1–9..... Woodland Wildflower Sale – online ordering open
- 5..... Forest Therapy | 9:30 a.m.
- 9..... Annual Meeting | 7 p.m.
- 12..... Bird Hike with Kevin Veara | 8 a.m.
- Plant Sale order pick up at Ostermeier Prairie Center | 8:30 a.m. – 12 p.m.
- Nature Journaling Workshop | 10 a.m. – 12 p.m.
- 16..... Tiny Adventurers – Rabbits | 9 – 10 a.m and 1 – 2 p.m.
- 17..... Spring Volunteer Naturalist Training | 12 – 2:30 p.m.
- 18..... Earth Day Presentation | The Hoogland | 5:30 – 8:30 p.m.
- 19..... Bird Hike with Kevin Veara | 8 a.m.
- Junior Naturalists – Rabbits | 10 a.m. – 12 p.m.
- Senior Naturalists – Rabbits | 1 – 3 p.m.
- Apr 25 – May 7 Sun-loving Plant Sale – online ordering open
- 25..... Prairie Tour | 10 a.m.
- 26..... Bird Hike with Kevin Veara | 8 a.m.
- 28..... Woodland Trail Tour | 10 a.m.

MAY

- 3..... Bird Hike with Kevin Veara | 8 a.m.
- 3 UIS Star Party at Cawley Meadow | 8:30 p.m. – 10 p.m.
- 6..... Book Club – *The Serviceberry* by Robin Wall Kimmerer | 10 – 11 a.m.
- 8..... Story Time with Lincoln Library | 10 a.m.
- 10..... Bird Hike with Kevin Veara | 8 a.m.
- Plant Sale order pick up at Ostermeier Prairie Center | 8:30 a.m. – 12 p.m.
- 14..... Tiny Adventurers – Nests and Eggs | 9 – 10 a.m and 1 – 2 p.m.
- 15..... Story Time with Lincoln Library | 10 a.m.
- 17..... Junior Naturalists – Nests and Eggs | 10 a.m. – 12 p.m.
- Senior Naturalists – Nests and Eggs | 1 – 3 p.m.
- 18..... Bird Hike with Kevin Veara | 8 a.m.
- Lunch in Bloom at Island Bay | 11 a.m.
- 22..... Story Time with Lincoln Library | 10 a.m.
- 26..... Woodland Tour | 10 a.m.
- 30..... Prairie Tour | 10 a.m.

JUNE

- 2..... Ecology Camp Starts
- 7..... 8K Trail Run and Kids' Fun Runs | 7:30 a.m.
- Soap Carving with Sangamon Valley Woodcarvers | 1 – 3 p.m.

Thank You to Our Many Supporters! *

* As of February 12, 2025

Annual Fund Donors

Charles and Jean Adams

Tom Ala

Jo Alessandrini

Julie Alessandrini-Costa

John Allen and Patti Hodges

Jan Anderson

Judith Anderson

Mark and Cynthia Anderson

Shawn Maree Andrews

Jim and Cindy Appenzeller

Frances Armstrong

Gail Austin

Celeste J. Bailey

Jerald and Lynne Barkmeier

Ralph and Karen Barr

Judy Bedore

Sandy Bellatti

Vivian Bennett-Held

Karen Berman

Richard and Carolyn Berning

Mr. and Mrs. Paul Beveridge

Amy and Joe Bianco

Ruth Biggers

Mike and Sandy Brewer

Curtis and Dorothy Brickey

Charles and Patricia Broers

Alyce Brooks in honor of

Jason Nagle

Robert Brouse

Deborah and Jeff Bruce

Neil and Katie Brumleve

Elizabeth Budinger in honor of

Virginia Scott

Alice Bulinski

Abby and Carl Buoy

Brad and Nancy Butcher

Karen Camp

Paul and Jackie A. Carey

Rosemary Carlson

Kay Caruso

Delinda Chapman and

Marco Mulder

Michael and Susan Childress

Kenton and Gwen Childs in

honor of Loni Leytem and

Linda Quigley

Tom Christensen

Linda Chronister Folse

Cassandra Claman

Thomas and Lisa Clay

Keith and Barbara Clayton

Kent and Karen Cochran in honor

of Harriet Knudson and Family

Max and Linda Comstock

Sheila Crain

Bryan and Robin Cross

Susan Cull

Tom and Nancy Curry

Polly and Mark Danforth

Barbara A. Darby

Drew and Jackie Davis

Sarah Davis

Steve Davis and Janet Hawes-Davis

William A. Deemer Jr.

Dan and Judy Dees

Mark and Debbi Denzler

Julie Dirksen

Kathryn and David Dobrinic

Dan Dungan

Bob and Carol Dyson

Albert O. Eck Jr. Memorial Fund

Don Ecklund

Jeff and Jennifer Egizii

Mary Ann Egizio

Diane Elmer

Karla Enrietto

Randy Erford

Judith Everson

Veronica and Dale Fesser

Susan and Doug Flanagan

Kevin and Kendra Floyd

Edward J. Gardner

Mary Gartung

Randy and Kathy Germeerad

Michael Gillette

Zale Glauberman

Michael and Sharon Graf

Linda Grant

Jim and Mary Grundel

Audrie and Robb Haag

John and Ruth Ann Hamilton

June and Tom Harmon

Steve and Jeannette Hassebrock

Mary Jo Haven

Dave and Cathy Hawkinson

Lewis and Elisabeth Herndon

Diana and Gary Hetherington

Tim and Jamie Hickmann

Ruth and Dave Hicks

Donna and Michael Holinga

David Holloway

Ron and Beth Horwedel

Bill and Carol Hunt

Nancy J. Hunter

Doranne Jacobson

Janet Janssen

Lois Jazo

Gitana Johnson

Linda and Rich Johnson

Glenn and Jan Jones

J. Patrick and Janice M. Joyce

Hilda Justison

Scott and Julie Kaiser

Jack Kanady

Janet L. Keistler

Patricia and Sheppard Kelly

Michael and Sandra Kennedy

Susan G. Kessler

Tom and Frances King

Scott and Karen Kirk

Nicholas Klobuchar

John and Patricia Kloppenburg

Timothy and Priscilla Kluge

Libby Kolaz

Lois Korda

Julie and Tom Krehbiel

Jill A. Krippe

Sharon and John Kwedar

Brenda Larison

Jill Leka

David and Val Leonatti

Colin and Melissa Liberman

Ann M. Londrigan

Mike and Linda Luepke

Greg and Kari Lutchka

Linda K. Mabus

Carol McCue and John Perkins

Sara McGartland

David and Diane Merchant

Arthur and Kathleen Meyer

Danny and Judith Morris

Marlene and Scott Mulford

Vivian Najim

J. Anthony Nelson

M. G. and Donna Nelson

Timothy and Judith Nicoud

Kathleen O'Bryen

Garden Club of Downers Grove

Lynn Pardie

Jim and Sherry Park

Susan Park

Darryl and Bonnie Parr

Sandy and Claudio Pecori

Dr. Michael and Marla Pick

Randy and Nancy Pickett

Jan Piland

Pattie and Mike Piotrowski

Karen H. Pletsch

David and Heather Pletsch

Ernest and Ruth Poani

Fred and Judy Prillaman

Sarah McAnulty Quilter

Dr. Mary Ann Rackauskas

Owen Regan

Samantha Reif

Cathleen and Randell D. Riley

Mary Catherine Ring
 Barbara and Bill Rogers
 Edwin and Elizabeth Roland
 Christopher P. Romaine
 Rob and Sue Sampson
 Trish Schlobohm
 William and Linda K. Schlosser
 Cathy Schmidt and Kay Vetter
 Charles Schweighauser
 Lynn and Steve Scott
 Virginia Scott
 Anne Scrivner
 Marlene Seaborn
 Miss Fran Sehring
 Val Simhauser
 Steven and Brad Simpson-Black
 Tom Skelly and Karen McNaught
 Cathy and Doug Slater
 Spfld Lakeshore Imp. Assoc.
 David and Cathy Steckel
 Nicky Stratton
 Bruce Strom
 James R. Struebing
 Megan A. Styles
 Dottie Troop
 Henry and Mary Trutter

Tom Trutter
 Ron and Ann Tucker
 Julia Ulaszek
 Al and Diane Urbanckas
 Wilma Van Scyoc and Mitch Roth
 Janice Vanderveen
 John Weitekamp and
 Frances Matthews
 Grace and Peter Wenz
 Robert and Karen Westbrook
 Linda Wheeler
 Doug and Joanne Whitley
 Wild Birds Unlimited
 Charles and Rebecca Wilkin
 Janet and Duane Wilson
 Peter and Cheryl Wise
 Karen and Randall Witter
 Susan L. Worley and
 Kent Kapitan
 Ivan A. Wright
 Kathryn Wrigley and Larry Muir
 Edward and Nina Wunderlich
 Dr. William Zimmer
 Nancy Zimmers
 Sharon Zook

2025 Ecology Camp Donation

Michael and Susan J. Shaw

2025 Fall Harvest Festival

Michael and Susan J. Shaw

2025 Lunch in Bloom Sponsors

Michael and Susan J. Shaw

2025 Pancake Breakfast Sponsors

Michael and Susan J. Shaw

Children's Woodland Garden

Darien Garden Club Sprouts
 Youth Program

Memorials



To the following individuals who have chosen to honor the memory of a loved one with a gift to Lincoln Memorial Garden, we say thank you.

The following donor gave a Memorial Tree in memory of
Julie McCubbin:

❖ Bryan McCubbin

The following donor gave a Memorial Tree in memory of **Dr. Sergio Rabinovich:**

❖ Heather Van Mater

The following donors gave in memory of **Tom Cappellin:**

❖ Judy Bedore

❖ Sharon and John Kwedar

The following donors gave in memory of **Helen Evenson:**

❖ James and Patricia Dunn

The following donors gave in memory of **Jimmie Lee Rosenthal:**

❖ Jeff Boehm

The following donors gave in memory of **Thomas Londrigan:**

❖ Feldman and Wasser

❖ Nancy Shaver

The following donor gave in memory of **Ed Norris:**

❖ Ann K. Niehaus

The following donors gave in memory of **Andy and Edie Glosecki:**

❖ Stanley and Mary Jo Wasser



As of February 12, 2025

FOUNDED 1936



Lincoln Memorial Garden & Nature Center

A Project of The Garden Clubs of Illinois, Inc.

2301 East Lake Shore Drive
Springfield, Illinois 62712-8908

Address Service Requested

Non-Profit Org.
U.S. Postage
PAID
Springfield, IL
Permit No. 800

